

# Maplewood Plaza Shopping Center

2237 Maplewood Dr, Lake Charles, LA 70663  
Neighborhood Shopping Center



## Property Highlights Include:

- 55,000 Total Square Feet
- 97% Occupied
- Multiple Ingress/Egress points on Maplewood Drive and Post Oak Road
- Anchored by Market Basket Grocery Store
- Traffic Light Intersection
- Great Visibility

**1,800 SF available (2237)**

With an estimated \$98 Billion dollars worth of planned expansion set to take place in the near future, Sulphur is poised to have the fastest growing economy in Louisiana.

Maplewood Plaza is a 55,000 SF neighborhood shopping center anchored by a Market Basket Grocery Store. Strategically located in the geographic center of town, Maplewood Plaza is the premier location for retailers in the Sulphur Market.

Contact Agent for more information.

127 W. Broad Street, Ste. 710  
Lake Charles, LA 70601

[www.InvestorsGroupLA.com](http://www.InvestorsGroupLA.com)

O. 337.433.0511

F. 337.439.4021

For More Information:

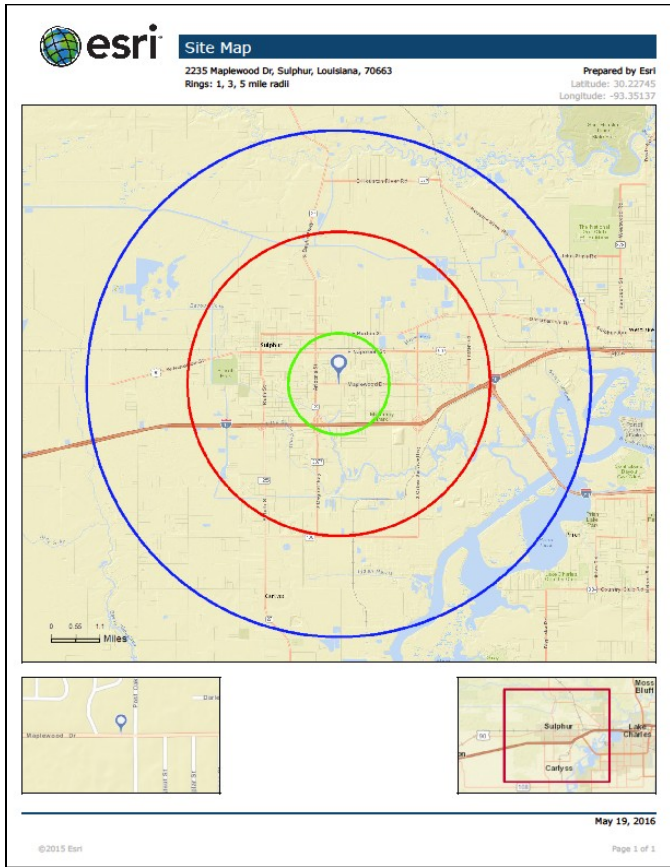
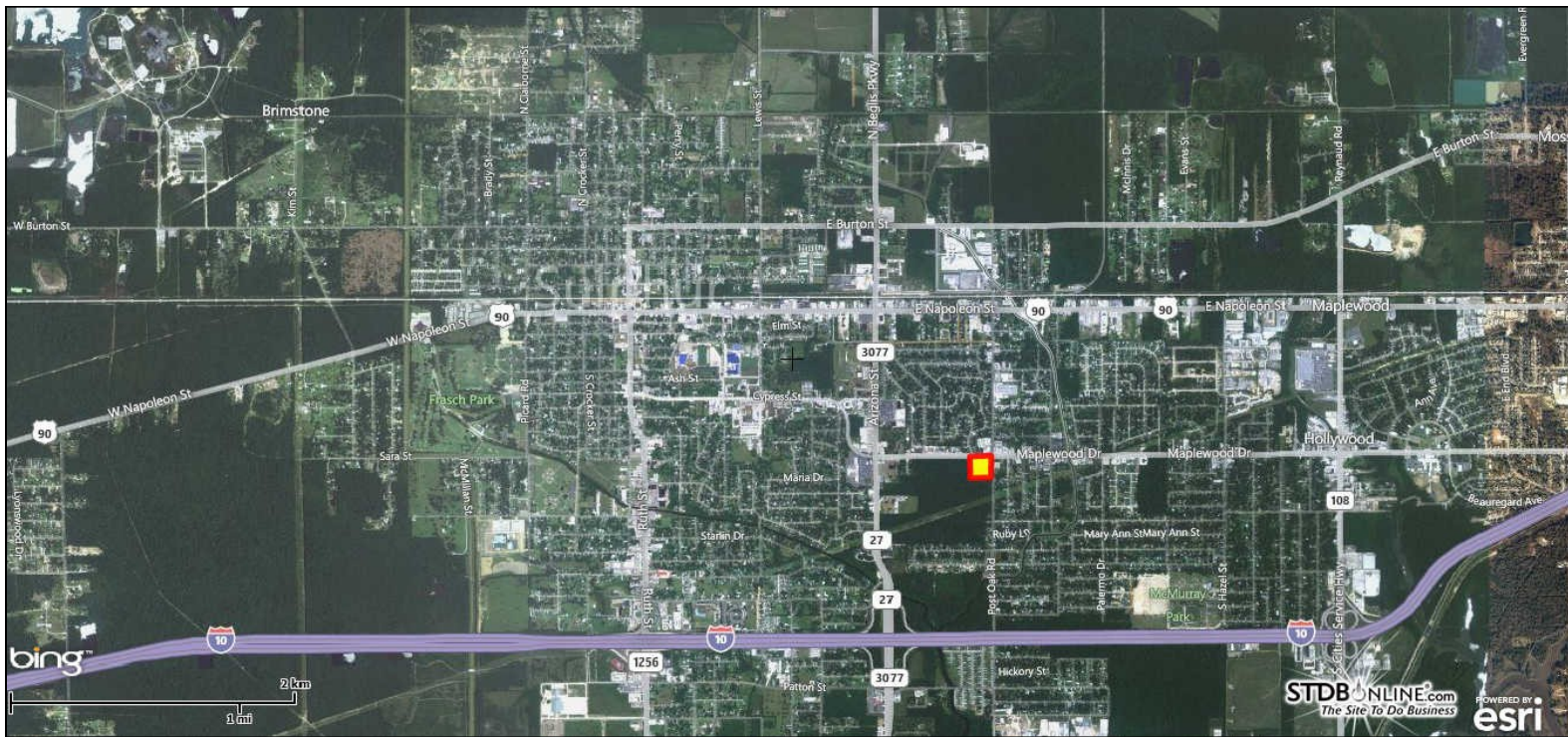
**J. Hardtner Klumpp, CCIM**

Project and Leasing Manager

337.263.2397

[hklumpp@InvestorsGroupLA.com](mailto:hklumpp@InvestorsGroupLA.com)





## 2015 DEMOGRAPHICS

### POPULATION ESTIMATE

1 mile	6,991
3 miles	25,669
5 miles	33,097

### AVERAGE HOUSEHOLD INCOME

1 mile	\$69,748
3 miles	\$61,329
5 miles	\$62,649

127 W. Broad Street, Ste. 710  
 Lake Charles, LA 70601

www.InvestorsGroupLA.com

O. 337.433.0511

F. 337.439.4021

For More Information:

**J. Hardtner Klumpp, CCIM**

Project and Leasing Manager

337.263.2397

hklumpp@InvestorsGroupLA.com

