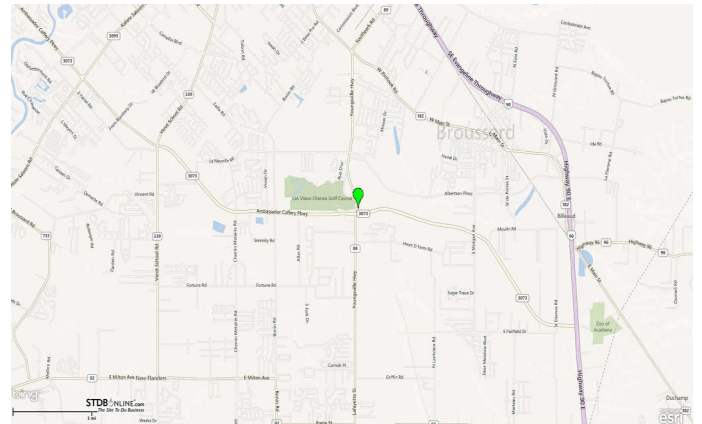


# Stine Out Parcel

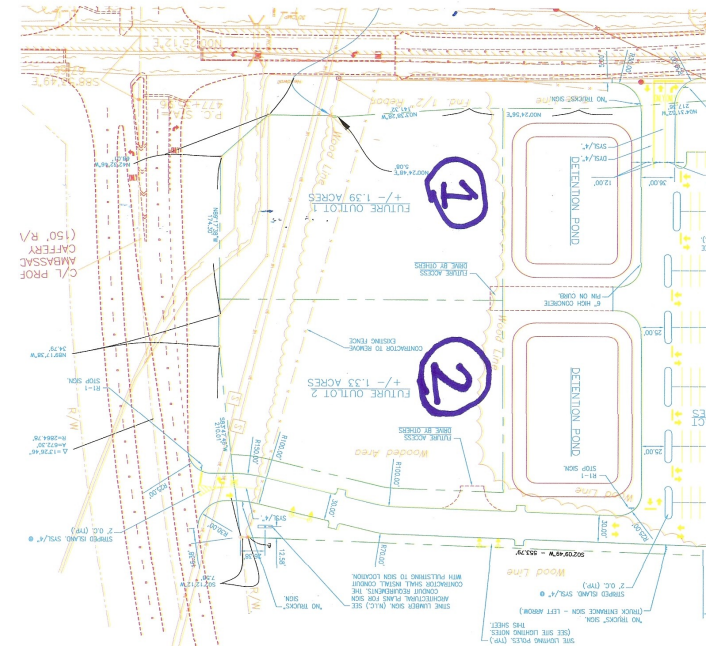
6501 Ambassador Caffery Parkway  
Broussard, LA 70518

Property Type:	Retail-commercial for sale
Out Parcel 1:	1.39 acres
Out Parcel 2:	1.33 acres
Price:	\$19 PSF
Nearest MSA:	Lafayette
Parish:	Lafayette
Property Status:	Vacant Land



## Property Overview

This prime Stine corner out parcel is located at the intersection of Ambassador Caffery Parkway and Youngville Highway, both streets serving as major thoroughfares for the Lafayette/Youngville area. This site is suitable for franchise food outlets, convenience stores, banking facilities, and any other business which requires high traffic and visibility. The Lafayette Economic Development Authority has deemed this area as the major growth corridor in the Acadiana region. Contact Agent for more information.



## Property Contact

**J. Hardtner Klumpp**

The Investors Group of Louisiana, LLC  
337-263-2397 [M]  
337-433-0511 [O]  
hklumpp@investorsgrouppla.com